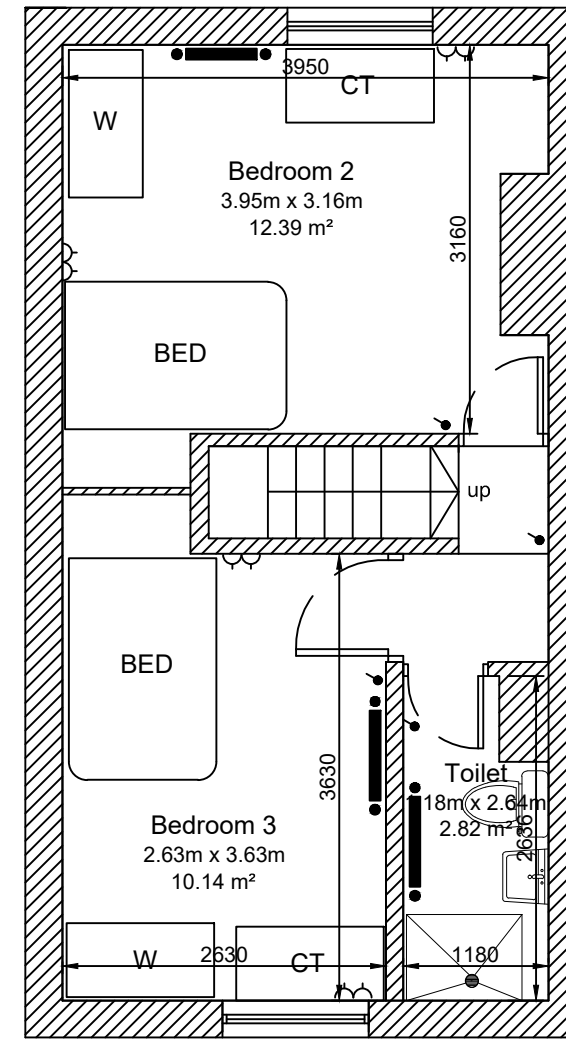


PROPOSED GROUND FLOOR
GROSS INTERNAL
FLOOR AREA 39 SQ M



PROPOSED FIRST FLOOR
GROSS INTERNAL
FLOOR AREA 30 SQ M

PROPOSED FLOOR PLAN 65 BLANDFORD ROAD, SALFORD

APPROX. GROSS INTERNAL FLOOR AREA 69 SQ M

Disclaimer: Floor plan measurement are approximate and are for illustrative purposes only. while we do not doubt the floor accuracy and completeness, you or your advisors should conduct a careful, independent investigation of hte property in respect of monetary valuation

